

70 E 21ST ST

1,852 SF

AT THE BASE OF 2036 S
MICHIGAN, A BUSY
RESIDENTIAL BUILDING WITH
HUNDREDS OF TENANTS AND
MULTIPLE SMALL BUSINESSES

⋮
JONATHAN ZIMMERMAN

📞 312-263-8787

✉️ JZIMMERMAN@WILLARDJONES.COM

🌐 WILLARDJONES.COM

GROUND LEVEL

RETAIL SPACE

FOR LEASE

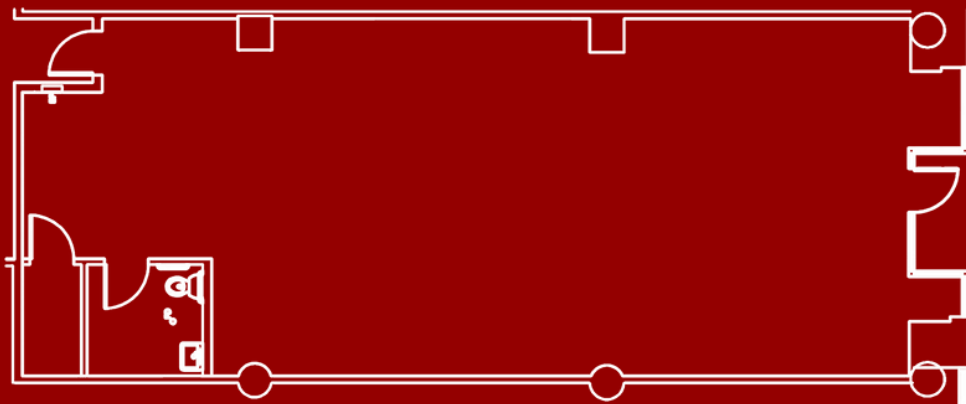
SOUTH LOOP

WILLARD JONES
REAL ESTATE LLC

- **STEPS AWAY FROM MCCORMICK PLACE, WINTRUST ARENA, CHESS RECORDS, AND MOTOR ROW**

- **TWO BLOCKS FROM THE CTA GREEN LINE, AS WELL AS MULTIPLE BUS LINES**

- **NEAR THE HISTORIC PRAIRIE DISTRICT NEIGHBORHOOD, SITE OF MULTIPLE LANDMARK HOMES AND MUSEUMS**



1 MILE RADIUS

Avg. Household Income

\$120,359

Population

48,729



**UPD
12,807**

Top Spending

**FOOD/BEVERAGE
HOUSEHOLD
TRANSPORTATION**