



MOTOR ROW

COLLECTION

2000 S WABASH

2229 S MICHIGAN

2010 S WABASH

2325 S MICHIGAN

2036 S MICHIGAN

2300 S MICHIGAN

FOR THE FIRST THREE DECADES OF THE 20TH CENTURY, MOTOR ROW WAS A GATEWAY TO AMERICA'S CAR CULTURE. A 1906 CHICAGO TRIBUNE ARTICLE PROCLAIMED THAT "CHICAGO HAS THE MOST IMPOSING AUTOMOBILE ROW OF AN CITY IN THE COUNTRY, AND CLAIM FOR A WORLD'S RECORD MIGHT WELL BE MADE WITHOUT MUCH CHANCE OF THERE BEING ANY DISPUTE."

OVER 110 YEARS LATER, MOTOR ROW IS MAKING A COMEBACK. JUST A FEW MILES SOUTH OF THE LOOP, MOTOR ROW IS FILLED WITH HISTORY, TRENDY EATERIES, BARS, CAFES, THEATERS, ARENAS, AND AN ABUNDANCE OF OFFICE AND RETAIL SPACE.

YOU CAN FIND YOUR WAY DOWN TO MOTOR ROW BY TAKING THE GREEN LINE TO CERMAK-MCCORMICK PLACE, RED LINE TO CERMAK-CHINA TOWN OR ON THE SCENIC LAKE SHORE DRIVE.

MOTOR ROW

2000 S WABASH

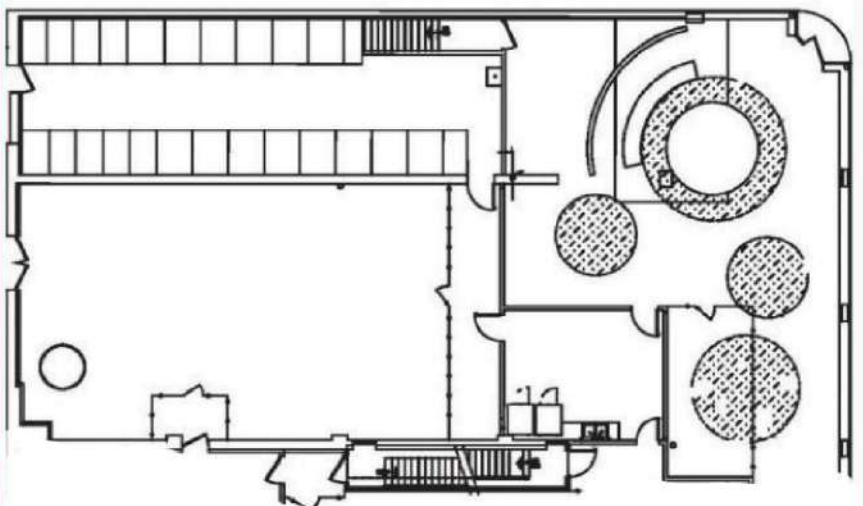
4,371 SF

First Floor

PARKING AVAILABLE

**BROAD WINDOW LINE FOR
NATURAL LIGHT**

**PROXIMATE TO CTA LINES,
RESTAURANTS, HOTELS, AND
LAKE SHORE DRIVE**



DIVISIBLE TO 1,252 SF OR 3,119 SF




MOTOR ROW

2010 S WABASH

5,130 SF

SEPARATE STREET ENTRANCE



**PROXIMATE TO CTA
LINES, RESTAURANTS,
HOTELS, AND LAKE
SHORE DRIVE**



MOTOR ROW

2036 S MICHIGAN

OFFICE SUITES AVAILABLE FROM

3,821 SF - 15,776 SF

RETAIL SPACE - 4,954 SF

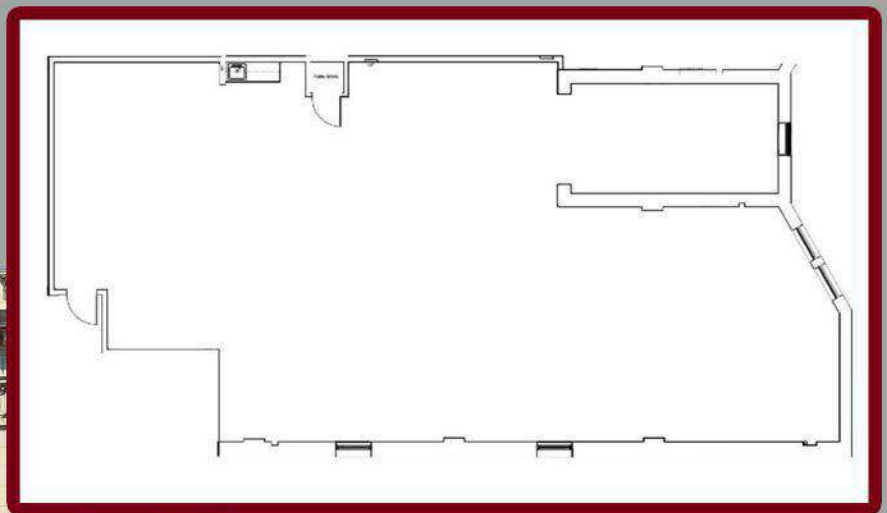


**HIGH CEILINGS
WIDE WINDOWS
RAW LOFT SPACES**

MOTOR ROW

2229 S MICHIGAN

**EXTERIOR SIGNAGE AVAILABLE
THIRD FLOOR OFFICE WITH STUNNING
NATURAL LIGHT**



SUITE 306

3,211 SF



MOTOR ROW

2325 S MICHIGAN

3RD FLOOR: 5,296 SF

2ND FLOOR: 5,296 SF

1ST FLOOR: 5,532 SF

OPTION TO LEASE INDIVIDUAL FLOORS OR ENTIRE BUILDING

**OPEN SPACES, UP TO 21 OFFICES, 3 CONFERENCE ROOMS,
RECEPTION AREA, SEPARATE STREET ENTRANCE**

FLOOR-TO-CEILING WINDOWS

EXTERIOR SIGNAGE AVAILABLE

PRIVATE BATHROOMS



MOTOR ROW

2300 S MICHIGAN

4,500 SF | DIVISIBLE

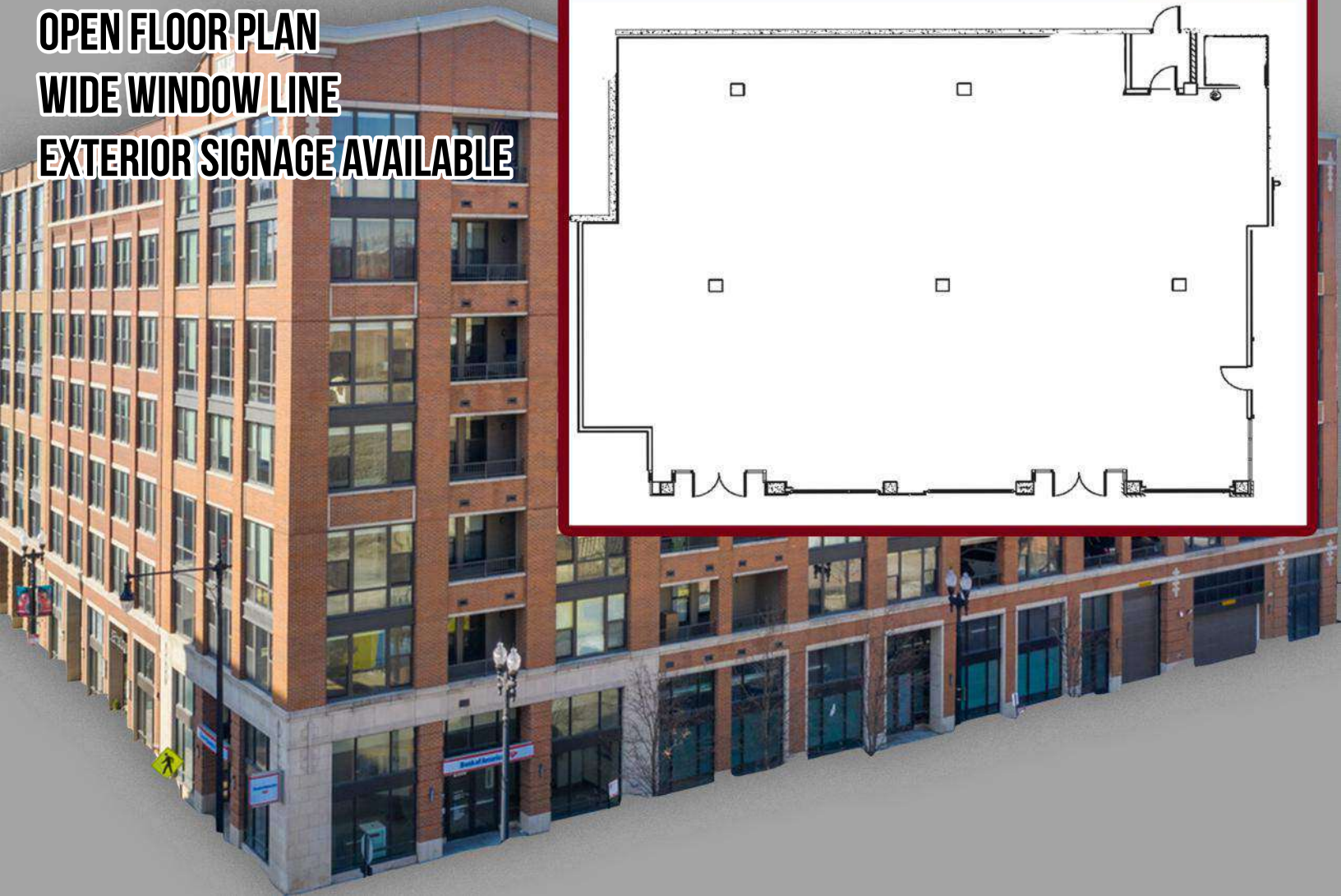
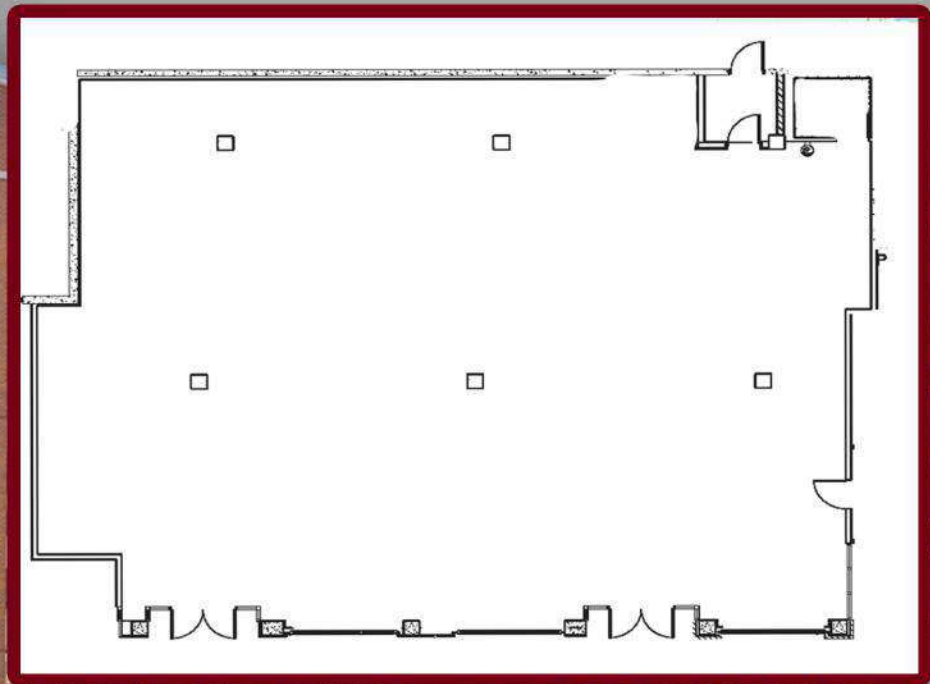
FIRST-FLOOR RETAIL SPACE IDEAL FOR MEDICAL OFFICE OR FOOD SERVICE

PARKING OPTIONS AVAILABLE

OPEN FLOOR PLAN

WIDE WINDOW LINE

EXTERIOR SIGNAGE AVAILABLE



MOTOR ROW



DEMOGRAPHICS

POPULATION (2 MILE)	141,648
ANNUAL GROWTH PROJECTED	.4%
MEDIAN AGE	35.9
AVG. HOUSEHOLD INCOME	\$95,956
AVG. HOUSEHOLD SIZE	2