

# 225



## SUPERIOR



**RIVER NORTH BUILDING FOR LEASE**

**42,000 SF | FURNISHED | MOVE-IN READY**

JONATHAN ZIMMERMAN

[JZIMMERMAN@WILLARDJONES.COM](mailto:JZIMMERMAN@WILLARDJONES.COM)

312.263.8787

[WILLARDJONES.COM](http://WILLARDJONES.COM)



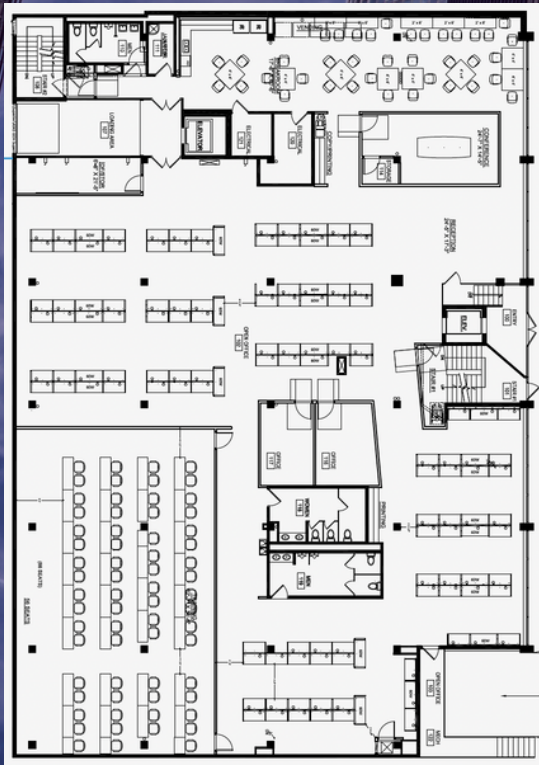
# FEATURES & BENEFITS

- RENOVATED ELEVATOR & ROOF
- FREIGHT ELEVATOR
- PRIVATE PARKING GARAGE WITH 18 SPACES

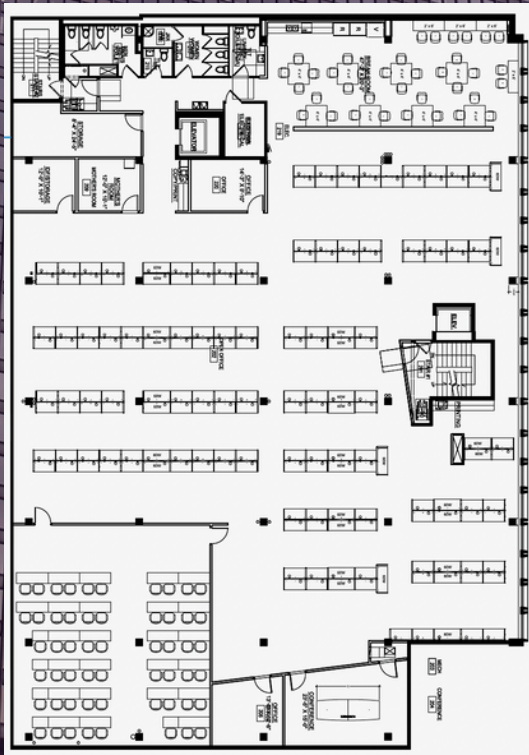
- IMMEDIATE ACCESS TO THE BROWN & PURPLE L TRAINS
- EXCELLENT CONDITION
- ENORMOUS WINDOWS

3 FLOORS AT 14,000 SF, EACH AVAILABLE FOR LEASE INDIVIDUALLY OR TOGETHER FOR 42,000 SF

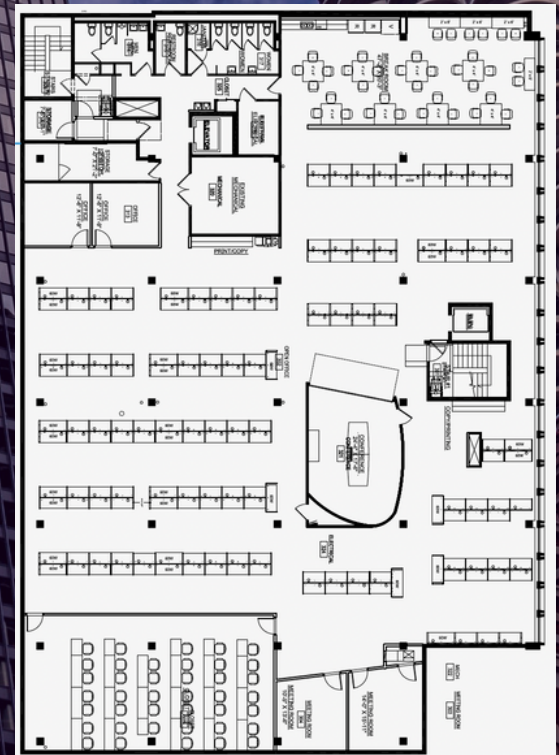
1ST FLOOR



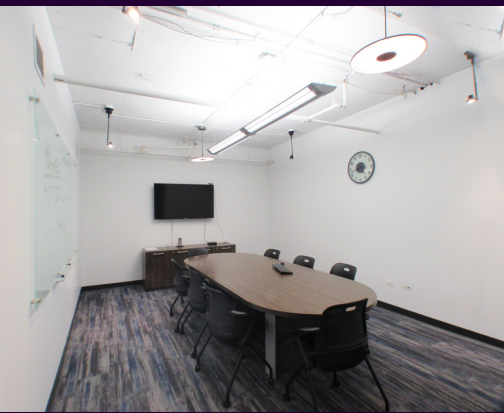
2ND FLOOR



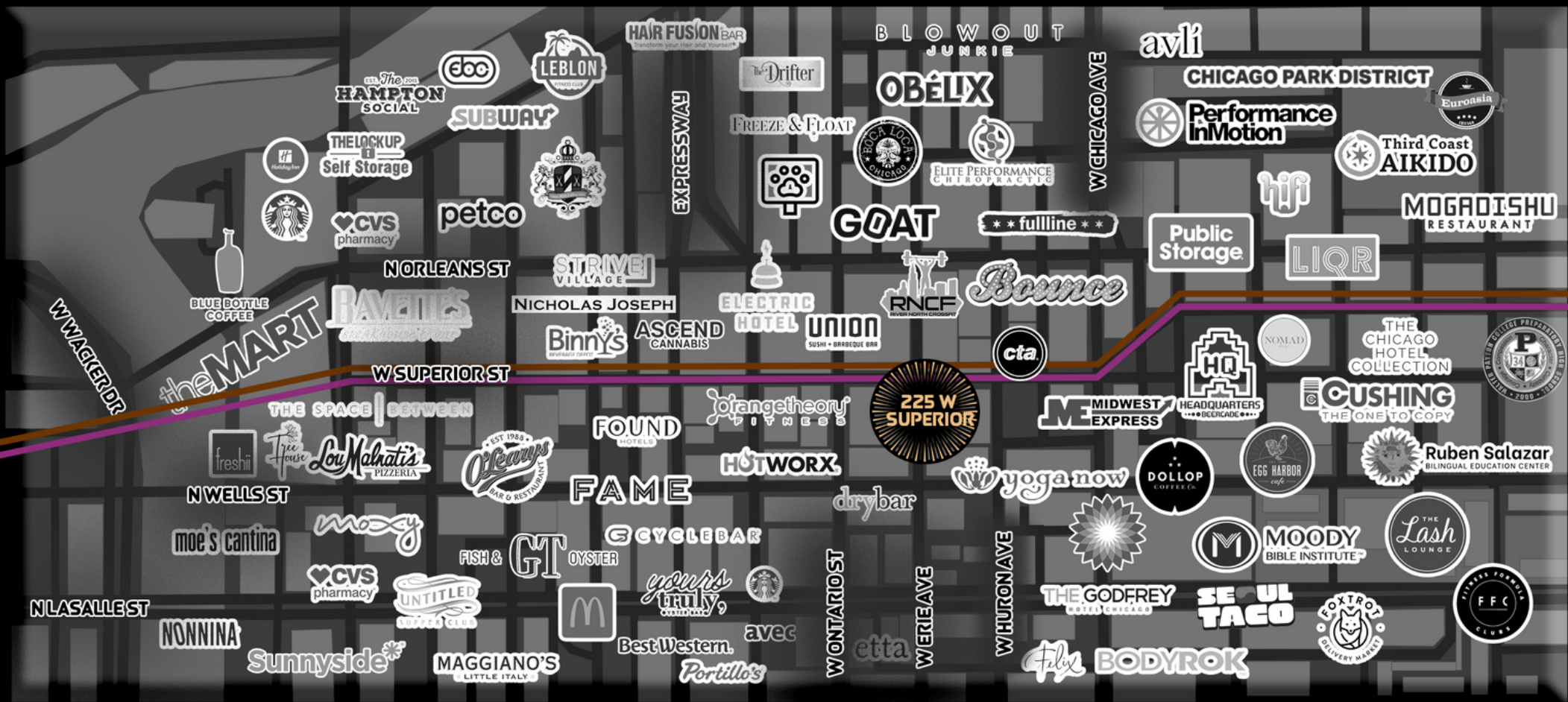
3RD FLOOR











## WITHIN 1 BLOCK

### WALKSCORE



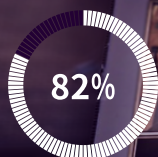
WALKER'S PARADISE

### RIDESCORE



RIDER'S PARADISE

### BIKESCORE



VERY BIKEABLE

- RESIDENTIAL BUILDINGS AND HOTELS
- SEVERAL FITNESS CENTERS
- ENTERTAINMENT AND SHOPPING
- NUMEROUS ART GALLERIES
- ABUNDANT PROFESSIONAL AND PERSONAL SERVICES
- DOZENS OF DINING OPTIONS
- BROWN AND PURPLE LINE TRAINS



# CONTACT



**JONATHAN ZIMMERMAN**

312.263.8787

[jzimmerman@willardjones.com](mailto:jzimmerman@willardjones.com)

[WillardJones.com](http://WillardJones.com)