

2300 S Michigan

4,500 SF / Divisible to 2,250 SF

LOCATED STEPS FROM
McCORMICK PLACE, THE CERMAK
GREEN LINE, WINTRUST ARENA,
MULTIPLE HOTELS &
RESTAURANTS

FIRST-FLOOR RETAIL SPACE PERFECT FOR
MEDICAL OFFICES, FOOD SERVICE, OR
COFFEE SHOPS

No Motor Row  Like Chicago's



DEMOGRAPHIC INFORMATION

Population (1 mile): 46, 172

Average household size: 2

Average age: 39

Med. household income: \$68,255

Population by Age:

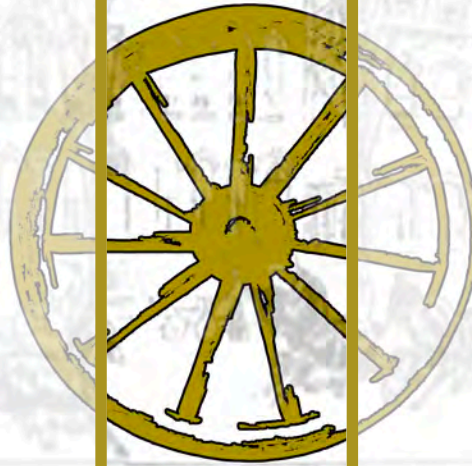
<20: 21%

20-34: 23%

35-49: 24%

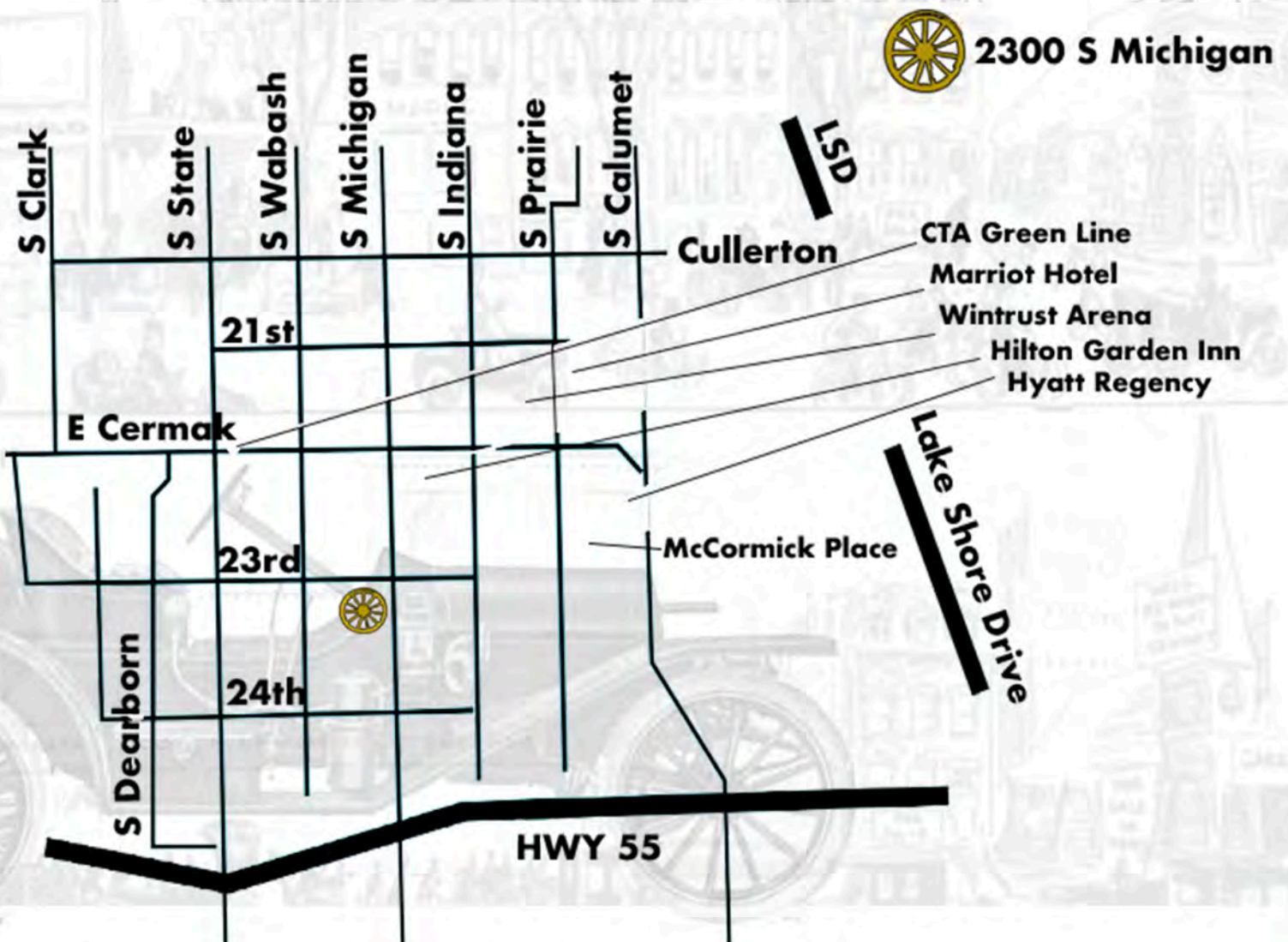
50-64: 18%

65+: 14%

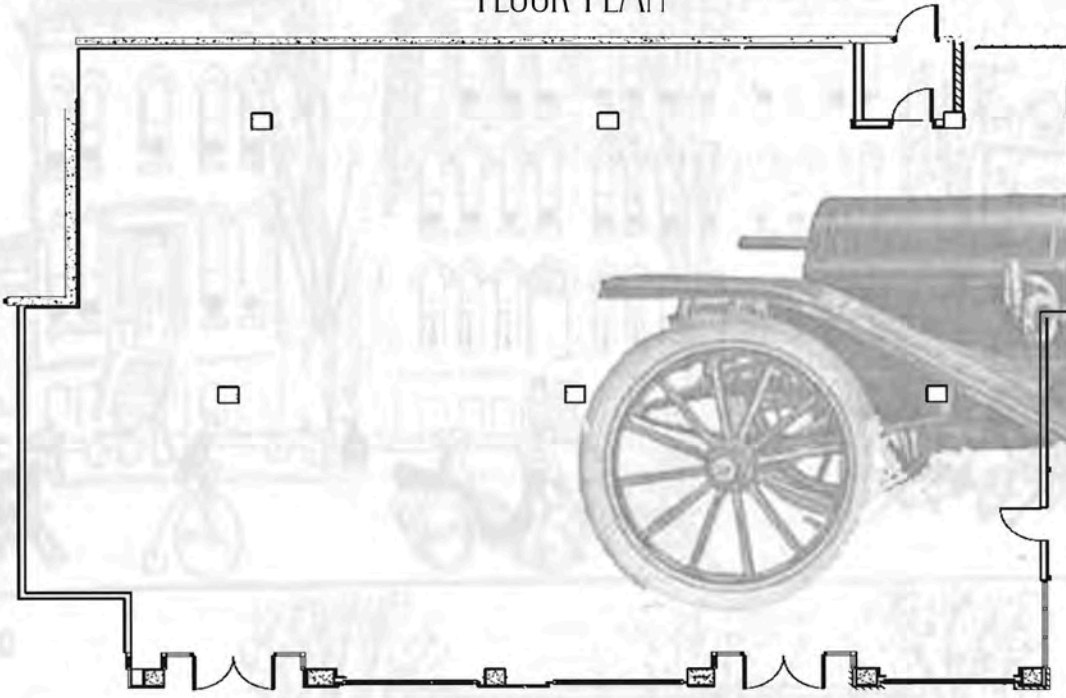


NEARBY

- Starbucks Coffee
- Chess Records
- Fatpour Tap Works
- Bank of America
- Pizano's
- Reggie's Chicago



FLOOR PLAN



MICHIGAN AVENUE

