

# 174 N MICHIGAN

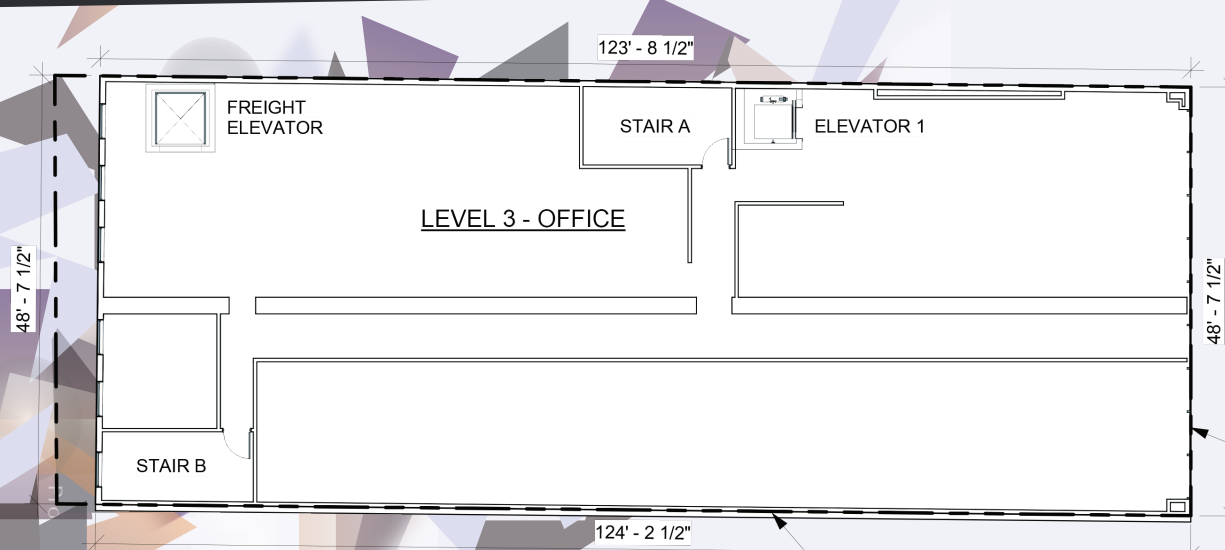
Break through the  
*dropped ceiling*  
and into your  
creative loft space



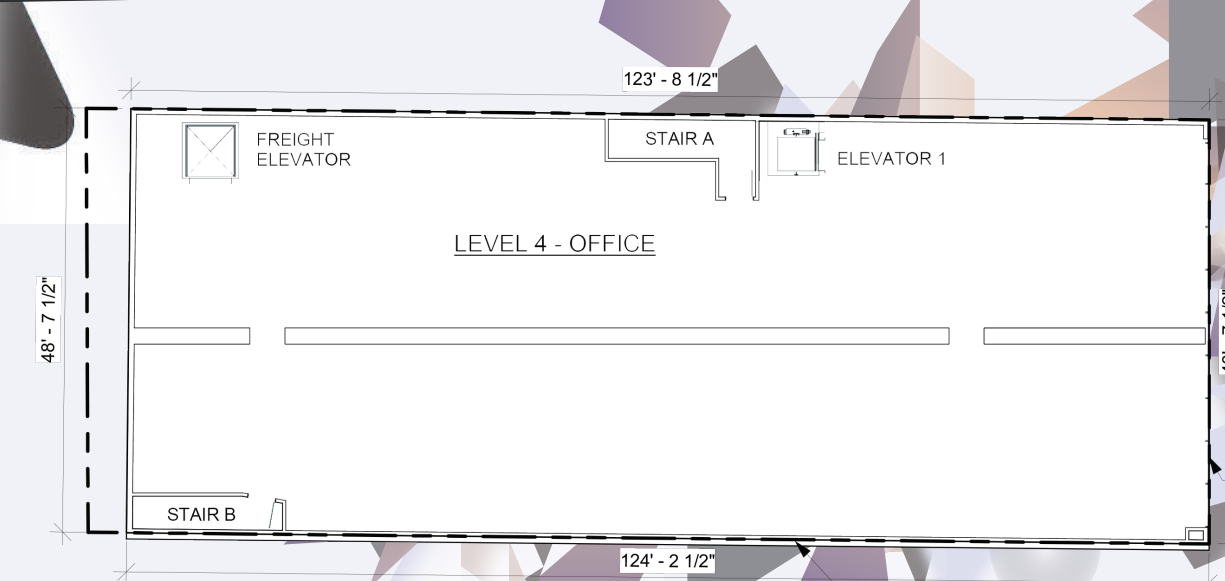
Wide open, customizable loft space ranging from  
6,026 - 12,052 SF available for lease

# 174 N MICHIGAN

## 3rd Floor 6,026 SF



## 4th Floor 6,026 SF



- Design your own space
- High timber ceilings
- Unique dual-level
- Views of Millennium Park
- Open floor plan
- Big windows



Proposed rendition

## NEW OWNERSHIP | PLANNED UPGRADES EXCEPTIONAL NORTH MICHIGAN AVENUE PRESENCE

### BUILDING FEATURES

- Prospective rooftop deck
- High ceilings and natural light
- Individually controlled HVAC
- Exterior signage opportunity
- Numerous public transportation and parking options nearby
- Steps from the new Loop Link bus system
- Steps from Millennium Park
- Naming rights available

