

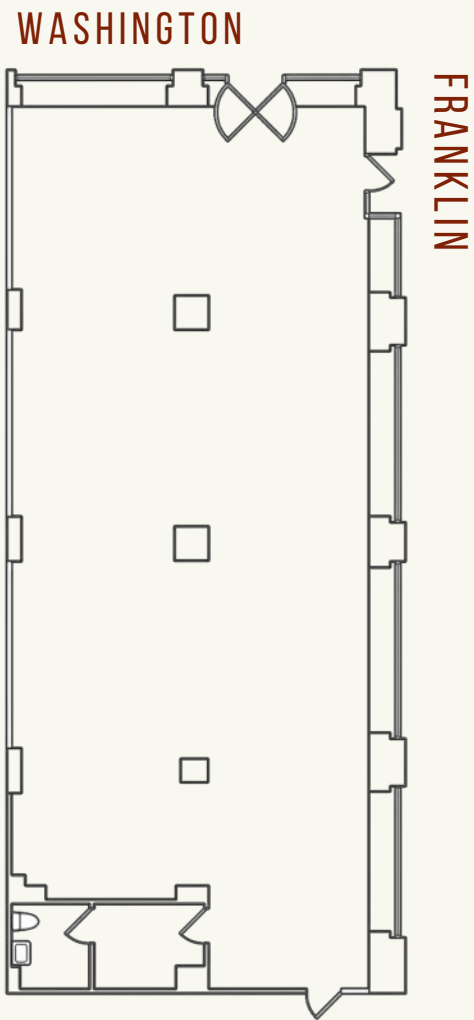
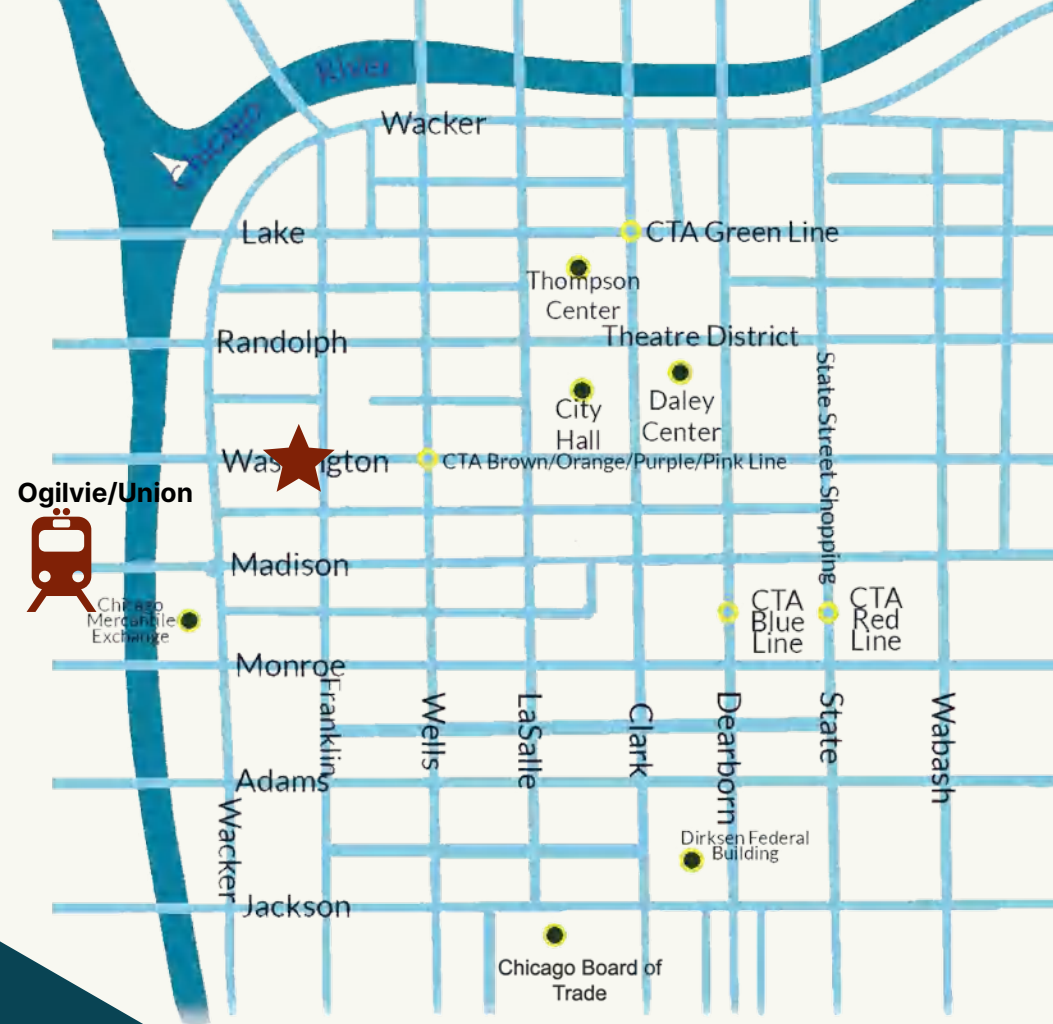
309 W WASHINGTON CORNER RETAIL SPACE FOR LEASE

2,755 SF



- Excellent street visibility on the corner of Washington and Franklin
- Prime Loop location provides year-round access to local population





TRANSPORTATION (1M)

- Ogilvie Transportation Center
- Union Station
- Washington/Wells L Station
- LoopLink Bus Stations
- Walking distance to Red, Blue, Purple, Orange, and Brown Line Trains

LOCAL POPULATION

- Numerous office towers, and residential buildings, including law offices, Fortune 500 companies, and federal building
- 10,000 daily pedestrian traffic count and a Walk Score of 97
- 10,000 daily vehicle traffic count and a Rider Score of 100
- Retail space located at the base of a heavily-occupied office tower

Demographics (3m) >>>

2025 POPULATION PROJECTION 421,796 (.6% growth from 2020)

MEDIAN AGE 35.9

2025 HOUSEHOLD PROJECTION 220,349 (.6% from 2020)

AVG. HOUSEHOLD INCOME \$129,562

APPX. TRAFFIC COUNT 18,065 (2018)

TOP CONSUMER SPENDING
Food & Alcohol
Transportation & Maintenance
Entertainment, Hobbies, Pets

Local Businesses >>>



Contact >>>

Jonathan Zimmerman

312.263.8787

jzimmerman@willardjones.com

WillardJones.com

WILLARD JONES
REAL ESTATE LLC

